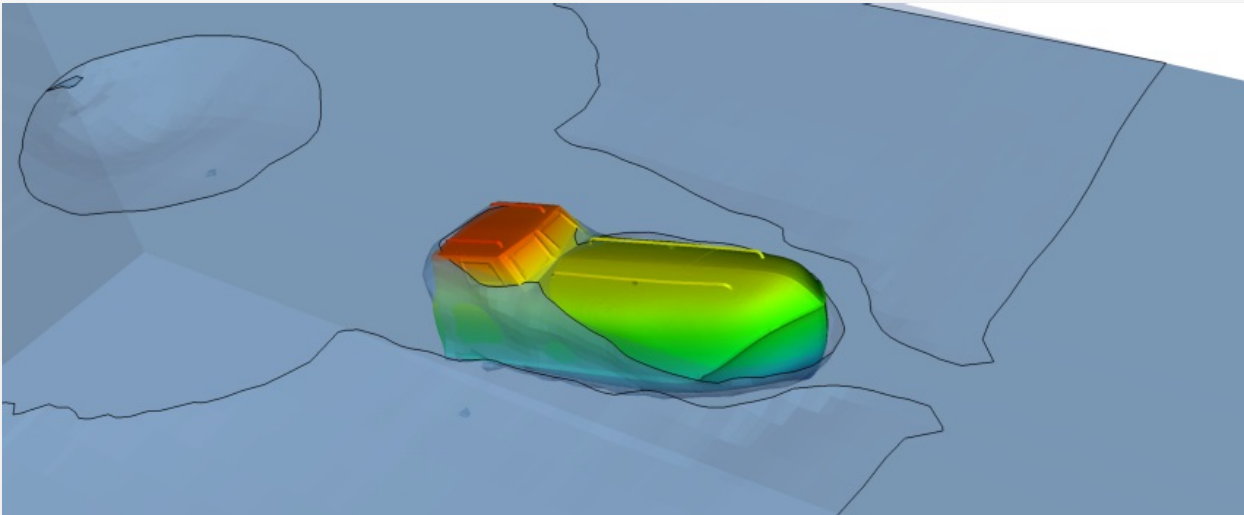


December 3, 2018

## BETA CAE Systems announces the release of the v18.1.4 of its software suite



### About this release

BETA CAE Systems announces the release of the new ANSA/EPILYSIS/META suite v18.1.4.

This version is addressed to those who have not yet migrated to the v19.x. With this release, the v18.1x branch receives further enhancements and corrections on identified issues.

The most important enhancements and fixes implemented are listed below.

### Contents

- [Enhancements and known issues resolved in ANSA](#)
- [Enhancements and known issues resolved in META](#)
- [Compatibility and Supported Platforms](#)
- [Download](#)

### Enhancements and known issues resolved in ANSA

#### Enhancements in ANSA

##### Scripting

base.TranslatePart(): The "group\_offset" argument is now enhanced with the "Current Part" and "Existing Part" options and the "pid\_offset" with the "Current Property" option.

#### Known issues resolved in ANSA

##### General

Pick mode would not be available for Parts in Database Browser through their assigned connection entities.

## Input/ Output

When a Subsystem created from disk was loaded, its content would be erroneously added to the GEOMETRY\_OUT\_OF\_SUBSYSTEMS container.

## Model Browser

ANSA might cease to respond when applying the function Check Missing & Misplaced, when sets were defined with ranges in the model.

New empty Parts would be created when a Subsystem containing multi-instantiated Parts was downloaded from DM.

## Compare tool

Unexpected termination might occur when pasting the path of the files for comparison in the Wizard.

## Data Management

Saving a Group in DM would not save its Shells and Grids.

DM Browser: Erroneous initial sorting of items would occur in flat view mode.

## Connections & Assembly

ANSA would not always write the same order and grouping of connections when exporting the same XML file.

## Meshing

Shell Mesh: Unexpected termination could occur when ANSA defaults file was loaded with the keyword entities\_reference\_library\_path.

Batch Meshing: Unexpected termination could occur in Batch Mesh when some macros were frozen.

## Scripting

base.DeleteEntity(): Cross section entities could not be deleted when referenced from a beam property.

For more details about the new software features, enhancements and corrections please, refer to the Release Notes document.

## Enhancements and known issues resolved in META

### Enhancements in META

#### Managing Curve Data

Nastran results in \*.pch format with DISPLACEMENTS - RMS are now supported.

#### Occupant Injury Criteria Toolbar

New options to show the score or only the cell color in the custom EuroNCAP spreadsheet are now available.

### Known issues resolved in META

#### General

Switching of Active/Visible Models using CTRL and Arrow keys might not work after copying models to multiple 3D windows.

#### Decks

PAM-CRASH includes could not be read through splitted lines with " & " separator.

#### Read Results

Curves' data from column ASCII files would be read erroneously.

#### Cut Planes

When the command cut plane was applied, the Fringebar's range would not be recalculated.

For more details about the new software features, enhancements and corrections please, refer to the Release Notes document.

## Compatibility and Supported Platforms

ANSA files saved by all the first and second point releases of a major version are compatible to each other. New major versions can read files saved by previous ones but not vice versa.

META Project files saved from version 18.1.4 are compatible and can be opened by META version 16.0.0 or later. To be readable by META versions earlier than v16.0.0, they have to be saved selecting the option "Version <16.0.0".

Support for 32-bit platform has been discontinued for all operating systems.

## Download

### Where to download from

Customers who are served directly by BETA CAE Systems, or its subsidiaries, may download the new software, examples and documentation from their account on our server. They can access their account through the "user login" link at our [web site](#).

Contact us if you miss your account details. The Downloads menu items give you access to the public downloads.

Customers who are served by a local business agent should contact the [local support channel](#) channel for software distribution details.

### What to download

All files required for the installation of this version reside in the folder named "**BETA\_CAE\_Systems\_v18.1.4**" and are dated as of **December 3, 2018**. These files should replace any pre-releases or other files downloaded prior to that date.

The distribution of this version of our pre- and post-processing suite is packaged in one, single, unified installation file, that invokes the respective installer and guides the procedure for the installation of the required components.

For the installation of the software on each platform type, the.sh installer file residing in the folder with respective platform name, for Linux and MacOS or the respective .msi installer file for Windows, 64bit, have to be downloaded.

In addition to the above, optionally, the META Viewer is available to be downloaded for each supported platform.

The tutorials and the example files reside in the folder named "TUTORIALS". This folder includes the complete package of the tutorials and example files, and a package with only the updated ones.

The Abaqus libraries required for the post-processing of Abaqus .odb files are included in the installation package and can be optionally unpacked.

Earlier software releases are also available in the sub-directory called "old" or in a folder named after the product and version number.