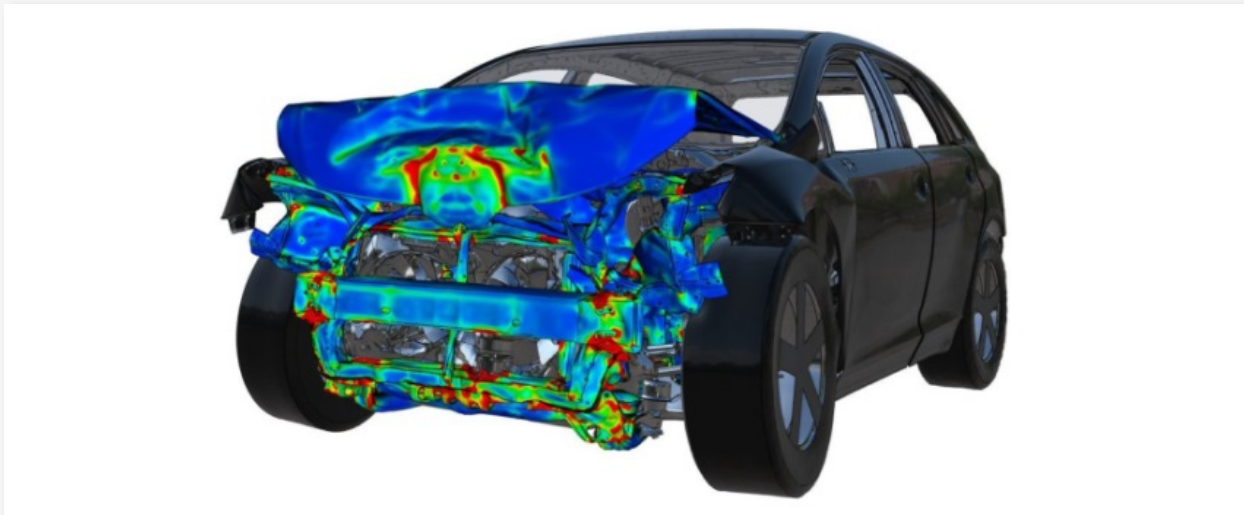


February 6, 2018

## BETA CAE Systems announces the release of the v17.1.4 of its software suite



### About this release

BETA CAE Systems announces the release of the new ANSA/EPILYSIS/META suite v17.1.4.

This maintenance release is focused on the correction of identified issues and is addressed to those who wish to continue to use the v17.1x branch with its issues resolved and not upgrade to v18.x.

The most important enhancements and fixes implemented are listed below.

### Contents

[Enhancements and known issues resolved in ANSA](#)

[Enhancements and known issues resolved in META](#)

[Compatibility and Supported Platforms](#)

[Download](#)

### Enhancements and known issues resolved in ANSA

#### Enhancements in ANSA

##### Data management

From now on, each time ANSA opens a subsystem from SPDRM, it reads along the .xml file exported by SPDRM with the subsystem's metadata and ensures that the SPDRM values prevail over those found within the file.

##### Safety

Pedestrian: Only the Bonnet entities are now considered for the creation of the Rear Bonnet Reference Line instead of the complete outer trim.

##### NVH Console

It is now possible to run multiple Configurations through Assembly > Run Multiple.

## Known issues resolved in ANSA

### Data management

Subsystems: GEB\_GN entities located in a subsystem would fail to be saved in ANSA DM.

### Connections & Assembly

In certain cases, executing Auto connect for bolt type connections could lead to unexpected termination.

### Batch Meshing

Applying the batch mesh tool could result in the inversion of some Faces' orientation.

### DECKs

ASCII STL: Files with more than 80 characters per line could not be read properly upon Input/ Output.

Switching between decks might result in unexpected termination for databases with composite properties.

### MORPH

The Magnitude of Volume entities would fail to be updated after Morphing.

For more details about the new software features, enhancements and corrections please, refer to the Release Notes document.

## Enhancements and known issues resolved in META

### Enhancements in META

#### Modal Response & FRF Assembly

Significant performance improvements for the calculation of FRF Assembly Animations.

#### User Toolbars

Harmonized H3-05 v1.5, H3-50 v1.0.1 dummies and LSTC H3-50 dummies are now supported in the Occupant Injury Criteria Toolbar.

### Known issues resolved in META

#### Read Results

The EKE Kinetic Energy from Nastran SOL103 could not be read in META.

#### A/LC Points

The A/LC Points of a 2d model can be found and loaded from the definitions of the respective 3d model (if already loaded).

#### Managing Curve Data

The issue with incorrect X-Axis unit system transformations for Nastran curves is now fixed.

#### Project Files & METADB

Unexpected termination could occur when saving a new metadb from a loaded project using "Save Visible" option.

#### File Export

Unexpected termination could occur when exporting curves in ISO format.

For more details about the new software features, enhancements and corrections please, refer to the Release Notes document.

## Compatibility and Supported Platforms

ANSA files saved by all the first and second point releases of a major version are compatible to each other. New major versions can read files saved by previous ones but not vice versa.

META Project files saved from version 17.1.4 are compatible and can be opened by META version 16.0.0 or later. To be readable by META

versions earlier than v16.0.0, they have to be saved selecting the option "Version <16.0.0".

Support for 32-bit platform has been discontinued for all operating systems.

## Download

### Where to download from

Customers who are served directly by BETA CAE Systems, or its subsidiaries, may download the new software, examples and documentation from their account on our server. They can access their account through the "user login" link at our [web site](#).

Contact us if you miss your account details. The Downloads menu items give you access to the public downloads.

Customers who are served by a local business agent should contact the [local support channel](#) channel for software distribution details.

### What to download

All files required for the installation of this version reside in the folder named "**BETA\_CAE\_Systems\_v17.1.4**" and are dated as of **February 6, 2018**. These files should replace any pre-releases or other files downloaded prior to that date.

The distribution of this version of our pre- and post-processing suite is packaged in one, single, unified installation file, that invokes the respective installer and guides the procedure for the installation of the required components.

For the installation of the software on each platform type, the .sh installer file residing in the folder with respective platform name, for Linux and MacOS or the respective .msi installer file for Windows, 64bit, have to be downloaded.

In addition to the above, optionally, the META Viewer is available to be downloaded for each supported platform.

The tutorials and the example files reside in the folder named "TUTORIALS". This folder includes the complete package of the tutorials and example files, and a package with only the updated ones.

The Abaqus libraries required for the post-processing of Abaqus .odb files are included in the installation package and can be optionally unpacked.

Earlier software releases are also available in the sub-directory called "old" or in a folder named after the product and version number.