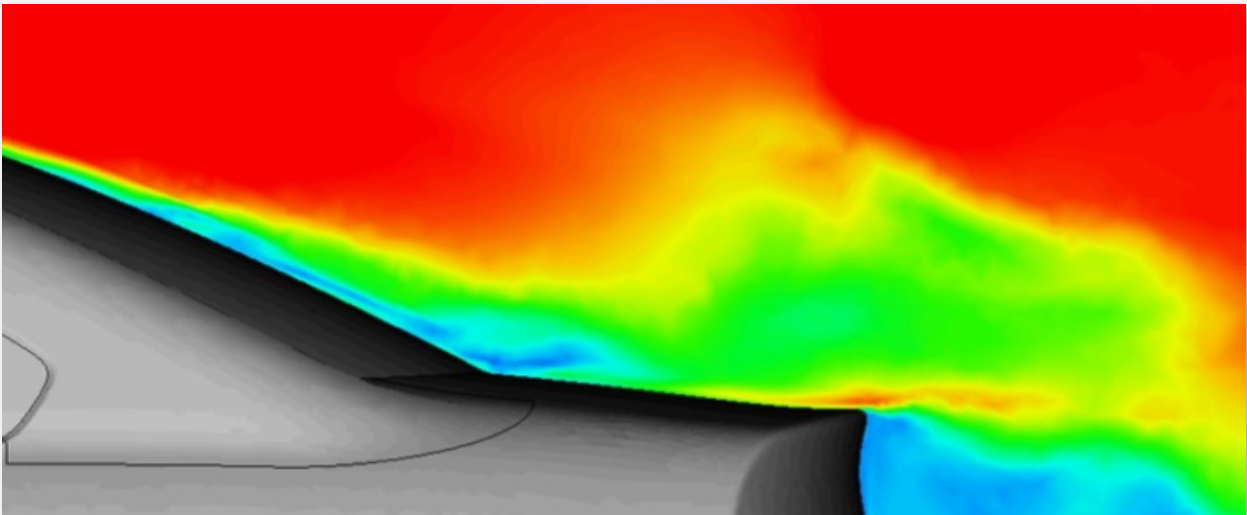


July 19, 2017

BETA CAE Systems announces the release of the v17.0.5 of its software suite



About this release

BETA CAE Systems announces the release of the new ANSA/EPILYSIS/META suite v17.0.5.

This maintenance release is focused on the correction of identified issues and is addressed to those who wish to continue to use the v17.0x branch with its issues resolved and not upgrade to v17.1x.

The most important enhancements and fixes implemented are listed below.

Contents

[Enhancements and known issues resolved in ANSA](#)

[Enhancements and known issues resolved in META](#)

[Compatibility and Supported Platforms](#)

[Download](#)

Enhancements and known issues resolved in ANSA

Enhancements in ANSA

Connections

Significant performance improvement in Seamlines Realization.

Safety

The calculated rotation point of the inclined option in the Pedestrian Tool is now given as a 3D point, making it possible to obtain its coordinates via functions, such as the *TOPO>Points>Info* or *MESH>Grids>Info*.

Known issues resolved in ANSA

CAD Translation

When importing an *.igs file with the option 'Read free geometry' disabled, the free geometric entities would be shown in the Model Browser.

Translating a CATProduct with the option "Flatten assemblies" deactivated could lead to unexpected termination.

General

When deleting a property with the option "Delete Included Entities" enabled, entities that referenced the property would be erroneously deleted. This affected also unused SETs.

Model Browser

Occasionally, entities belonging to an inactive Loadcase would be output along with the exported Simulation Run.

Subsystems would not be updated when the contents of the parts were modified.

Data Management

Switching the main view mode to Subsystem could lead to unexpected termination.

Assembly

SeamLines Realization of closed SOLID-WELD and OVERLAP-SHELL seamlines could lead to unexpected termination.

Volume Mesh

Checks *Mesh>Negative Volume*: In certain cases the check would report wrong number of negative elements detected on model.

Tools *Cavity [Volume]*: Performing 'Back' action from the last step in the wizard could lead to unexpected termination.

Batch Meshing

Tubes neighboring to triple bounds would lead to unexpected termination when the "Fill" option was chosen.

DECKs

Checks *Contacts*: When a contact had more than one penetration of PID pairs, the Fix option would not respect the non-selected as frozen.

Laminate Tool: When splitting three or more merged layers the resulting stacking order would be reversed.

AUXILIARIES *IMPACTOR>New*: Performing "Impactor Positioning" that was set up including BEAMs, either in the barrier or in the body, could lead to unexpected termination.

When meshed geometrical entities were given as custom entities, the *base.DeckMassInfo()* function would return wrong result.

NASTRAN

Materials with TABLES1 cards might not be imported properly into ANSA when read through the Material DB.

LS-DYNA

The M00 format initial hierarchy would be overwritten, after the input of any *.key file.

RADIOSS

Output for RADIOSS 11, 12 and 13 of a group containing */Brick* elements would result in an empty group, when used by an */INTER/TYPE7*.

PERMAS

Input of CONLOAD magnitude values would be erroneously read when written as integers instead of floats.

For more details about the new software features, enhancements and corrections please, refer to the Release Notes document.

Enhancements and known issues resolved in META

Enhancements in META

Supported Interfaces

Support of PFMODE curves results from OPTISTRUCT *.pch files.

Toolbars

It is now possible to add in IIHS Side Impact intrusion plot, curves that show the intrusion measured in a physical test or in another simulation.

Known issues resolved in META

Supported Interfaces

Unexpected termination could occur when reading Abaqus input files with fasteners and connectors.

LS-DYNA rbdout and ncfrc time history results were not read correctly from binout files of latest LS-DYNA versions.

Incorrect cross-section drawing of certain CBEAM and PBEAML Nastran elements.

Unexpected termination when reading Femzipped PAMCRASH files.

Incorrect abscissa values were read from certain Diadem files.

Handling Entities

Shell elements were not displayed on work stations with NVIDIA Quadro K4000 graphics cards, driver: 331.82.

The visibility of ANSA part contents in META was not accurate.

Annotations

Unexpected termination could occur when accessing the Templates list on MS Windows workstations.

Math Operations on Field Data

X, Y, Z Vector Element User Field Functions would not perform correctly.

Curve Functions

Unexpected software block using the command "xyplot report append ..."

NVH Calculators

Phase of FRF Assembly sensitivities was calculated with a difference of 180°.

Wrong Responses would be calculated from Medina results files.

Unexpected termination could occur when trying to animate Eigenmodes with Autocorrelation enabled in Modal & FRF Correlation tool.

METADB and Project Files

METADB files could not be read if the options Split Large Files and Lossless Compression were enabled during save.

Toolbars

Occupant Injury Criteria tool could not work for H3-05 dummy using dummy's spreadsheet created prior to META v17.0.0.

The status of certain settings of IIHS tool would not be correctly updated after reading Configuration files.

For more details about the new software features, enhancements and corrections please, refer to the Release Notes document.

Compatibility and Supported Platforms

ANSA files saved by all the first and second point releases of a major version are compatible to each other. New major versions can read files saved by previous ones but not vice versa.

META Project files saved from version 17.0.5 are compatible and can be opened by META version 16.0.0 or later. To be readable by META versions earlier than v16.0.0, they have to be saved selecting the option "Version <16.0.0".

Support for 32-bit platform has been discontinued for all operating systems.

Download

Where to download from

Customers who are served directly by BETA CAE Systems, or its subsidiaries, may download the new software, examples and documentation from their account on our server. They can access their account through the "user login" link at our [web site](#). Contact us if you miss your account details. The Downloads menu items give you access to the public downloads. Customers who are served by a local business agent should contact the [local support channel](#) channel for software distribution details.

What to download

All files required for the installation of this version reside in the folder named "**BETA_CAE_Systems_v17.0.5**" and are dated as of **July 19, 2017**. These files should replace any pre-releases or other files downloaded prior to that date.

The distribution of this version of our pre- and post-processing suite is packaged in one, single, unified installation file, that invokes the respective installer and guides the procedure for the installation of the required components.

For the installation of the software on each platform type, the .sh installer file residing in the folder with respective platform name, for Linux and MacOS or the respective .msi installer file for Windows, 64bit, have to be downloaded.

In addition to the above, optionally, the META Viewer is available to be downloaded for each supported platform.

The tutorials and the example files reside in the folder named "TUTORIALS". This folder includes the complete package of the tutorials and example files, and a package with only the updated ones.

The Abaqus libraries required for the post-processing of Abaqus .odb files are included in the installation package and can be optionally unpacked.

Earlier software releases are also available in the sub-directory called "old" or in a folder named after the product and version number.