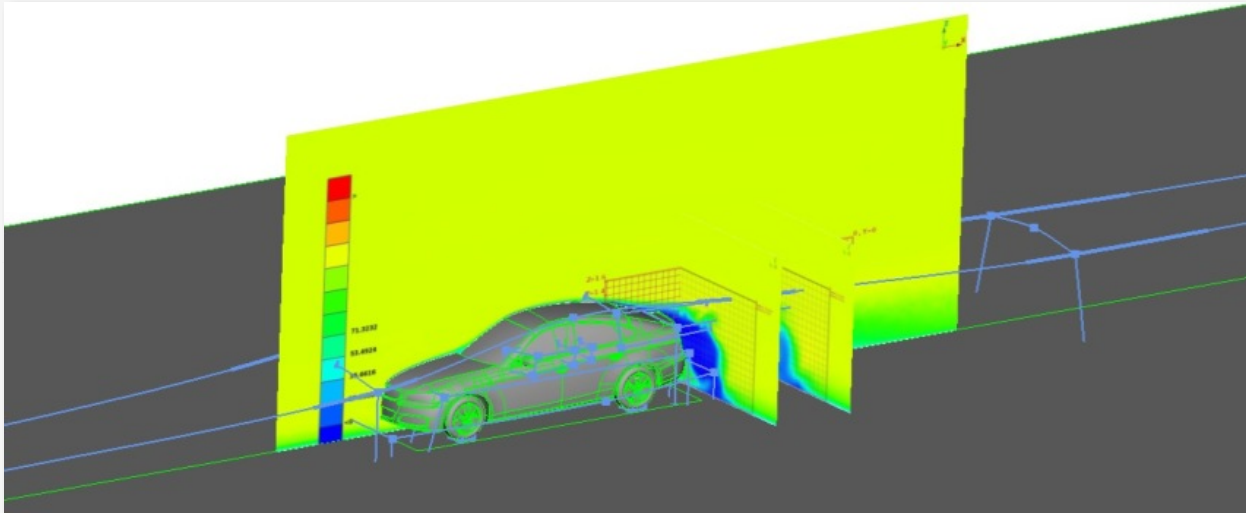


September 22, 2016

## BETA CAE Systems announces the release of the v17.0.1 of its software suite



### About this release

BETA CAE Systems announces the release of the new ANSA / EPILYSIS / META v17.0.1 suite.

This maintenance release focuses on resolving identified issues with v17.0.0.

The most important additions and fixes implemented in v17.0.1 are listed below.

### Contents

[Known issues resolved in ANSA](#)

[Enhancements in and known issues resolved in META](#)

[Compatibility and Supported Platforms](#)

[Download](#)

### Known issues resolved in ANSA

#### Model Browser

Replace Part: The option to Delete Internal/External connections might not work when connections were assigned to separate from the referenced ones Parts.

Loadcase Manager: Exporting Simulation Runs with referenced loads from files could lead to unexpected termination.

#### Compare Tool

SPCs defined on sets would not update, when replacing a related part through the Compare Tool.

#### Volume Mesh

Tetra Rapid: Possible cases of negative volume elements and collapsed Tetra and Pyramid elements have been corrected.

Hexa Poly: Occasionally, negative elements would be generated.

Layers: Correction of issues including the connection of the layers to side walls with different mesh, gaps between connected layers and walls, and quads split into trias.

## DECKs

Output: Include rules might not be written correctly when exporting Include files through the List.

Safety: Improved performance of Positioning the headform for a target point.

For more details about the new software features, enhancements and corrections please, refer to the Release Notes document.

## Enhancements and known issues resolved in META

### Enhancements in META

#### META Projects

Significant improvements in reading META projects with several models, pages and windows.

#### Scripting

New script module with functions to handle NVH applications.

#### User Toolbars

Support of LS-DYNA and RADIOSS SID2s v4 dummy in the OIC toolbar.

Reading of results on integration points in the CompositePost toolbar.

### Known issues resolved in META

#### Supported Interfaces

Reading Abaqus vector results, the direction of stress components was not correct.

Unexpected termination could occur when reading compressed LS-DYNA z3plot files.

#### User Toolbars

Certain PAM-CRASH dummies were not supported correctly by the OIC toolbar.

In the CompositePost toolbar layer stacking was drawn in reversed order.

For more details about the new software features, enhancements and corrections please, refer to the Release Notes document.

## Compatibility and Supported Platforms

ANSA files saved by all the first and second point releases of a major version are compatible to each other. New major versions can read files saved by previous ones but not vice versa.

META Project files saved from version 17.0.1 are compatible and can be opened by META version 16.0.0 or later. To be readable by META versions earlier than v16.0.0, they have to be saved selecting the option "Version <16.0.0".

Support for 32-bit platform has been discontinued for all operating systems.

## Download

### Where to download from

Customers who are served directly by BETA CAE Systems, or its subsidiaries, may download the new software, examples and documentation from their account on our server. They can access their account through the "user login" link at our [web site](#).

Contact us if you miss your account details. The [ PublicDir ] link will give you access to the public downloads area.

Customers who are served by a local business agent should contact the [local support channel](#) channel for software distribution details.

## What to download

All files required for the installation of this version reside in the folder named "**BETA\_CAE\_Systems\_v17.0.1**" and are dated as of **September 22, 2016**. These files should replace any pre-releases or other files downloaded prior to that date.

The distribution of this version of our pre- and post-processing suite is packaged in one, single, unified installation file, that invokes the respective installer and guides the procedure for the installation of the required components.

For the installation of the software on each platform type, the .sh installer file residing in the folder with respective platform name, for Linux and MacOS or the respective .msi installer file for Windows, 64bit, have to be downloaded.

In addition to the above, optionally, the META Viewer is available to be downloaded for each supported platform.

The tutorials and the example files reside in the folder named "TUTORIALS". This folder includes the complete package of the tutorials and example files, and a package with only the updated ones.

The Abaqus libraries required for the post-processing of Abaqus .odb files are included in the installation package and can be optionally unpacked.

Earlier software releases are also available in the sub-directory called "old" or in a folder named after the product and version number.