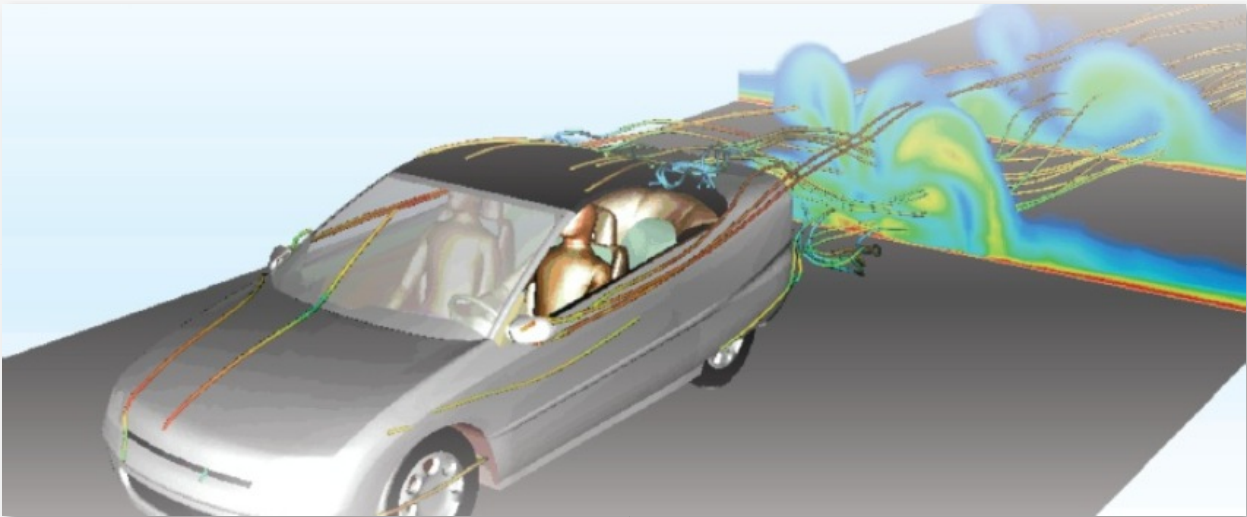


April 14, 2016

BETA CAE Systems announces the release of the v16.0.4 of its software suite



About this release

BETA CAE System announces the release of v16.0.4 of its software suite.

This maintenance release focuses on the correction of identified issues for the BETA CAE suite 16.0x branch and is addressed to those who wish to continue to use the v16.0x branch -and not upgrade to v16.1x-with its issues resolved.

The core corrections have been also propagated to the imminent new release v16.1.2 of the v16.1x branch.

The most important additions and fixes are listed below:

Contents

- [Known issues resolved in ANSA](#)
- [Enhancements and known issues resolved in META](#)
- [Compatibility and Supported Platforms](#)
- [Download](#)

Known issues resolved in ANSA

General

ANSA_TRANSL.py script could not be loaded when its directory path contained single quotes.

Topo

The scripting function MidSurfAuto would be applied on the first solid when more than one was declared in the function.

Shell Mesh

Grids: Saving the Database after applying Manual or Auto Paste on areas with Solids belonging to Volumes could lead to unexpected termination.

Volume Mesh

When using the Cavity Hexa dominant function, the projection on the seats could fail.

Safety

Some optional arguments of the script function SafetyRaster() did not work properly, resulting in erroneous function behavior.

Morph

Direct Morphing: In certain cases, upon element selection for Crossec Morph tool, unexpected termination could occur.

Box Morphing: A frozen nested element loaded in a cylindrical box might be morphed when the inner radius was modified.

Optimization

In Optimization task, when a Design Variable's range of values was of TYPE: INT and RANGE: LIST, the DOE report tool might not separate and report correctly the values of the list.

Solver Decks

Laminates: In the Laminate tool, selecting a Laminate Property, defined on meshed geometry and containing Layers with rosettes, could lead to unexpected termination.

Fluent

Using periodic boundary conditions during output could display an erroneous message in the Info window.

When more than one periodic boundary condition existed in the model, the output would be blockaded.

A Set containing the Unmatched Faces would be created when a Periodic boundary condition is not well defined.

Radioss

The Keyword /LINE/SURF/ would be erroneously output as /LINE/LINE.

For more details about the new software features, enhancements and corrections please, refer to the Release Notes document.

Enhancements and known issues resolved in META

Enhancements in META

Supported interfaces

ADINA 10.2 Contact results from OP2 files are now supported.

NASTRAN intermediate Stress results from OP2 files are now supported.

Known issues resolved in META

General

µETA batch execution could release the license when the server had the idle option activated.

The performance issue for result mapping in huge models has been resolved.

NVH

Responses calculated from the FRF Assembly tool for multiple frequency ranges might not be correct.

2D Plots

Curves were not saved correctly in PamView format.

META viewer

META Viewer 64-bit ActiveX control might not be installed correctly.

For more details about the new software features, enhancements and corrections please, refer to the Release Notes document.

Compatibility and Supported Platforms

ANSA files saved by all the first and second point releases of a major version are compatible to each other. New major versions can read files saved by previous ones but not vice versa.

META Project files saved from version 16.0.4 are compatible and can be opened by META version 16.0.0 or later. To be readable by META versions earlier than v16.0.0, they have to be saved selecting the option "Version <16.0.0".

Support for 32-bit platform has been discontinued for all operating systems.

Download

Where to download from

Customers who are served directly by BETA CAE Systems, or its subsidiaries, may download the new software, examples and documentation from their account on our server. They can access their account through the "user login" link at our [web site](#).

Contact us if you miss your account details. The [PublicDir] link will give you access to the public downloads area.

Customers who are served by a local business agent should contact the [local support channel](#) channel for software distribution details.

What to download

All files required for the installation of this version reside in the folder named "**BETA_CAE_Systems_v16.0.4**" and are dated as of **April 14, 2016**. These files should replace any pre-releases or other files downloaded prior to that date.

The distribution of this version of our pre- and post-processing suite is packaged in one, single, unified installation file, that invokes the respective installer and guides the procedure for the installation of the required components.

For the installation of the software on each platform type, the.sh installer file residing in the folder with respective platform name, for Linux and MacOS or the respective .msi installer file for Windows, 64bit, have to be downloaded.

In addition to the above, optionally, the µETA Viewer is available to be downloaded for each supported platform.

The tutorials and the example files reside in the folder named "TUTORIALS". This folder includes the complete package of the tutorials and example files, and a package with only the updated ones.

The Abaqus libraries required for the post-processing of Abaqus .odb files are included in the installation package and can be optionally unpacked.

Earlier software releases are also available in the sub-directory called "old" or in a folder named after the product and version number.