

BETA CAE Systems S.A. introduces **SPDRM**

- the new generation
Simulation Process Data and Resources Management
software -

Introduction

Addressing the problem of contemporary CAE community to integrate data, processes and resources, BETA CAE Systems S.A. brings forth a new solution for driving high quality and efficient virtual product development procedures.

This new software tool, the Simulation, Process, Data & Resources Manager (SPDRM), provides a simple and intuitive way to capture, deploy and manage CAE process workflows by integrating the resources, the tools and the data associated with these.

Reflecting a deep understanding of the demands of simulation and its role in the enterprise, it couples with the enterprise PDM system and integrates CAE into higher level business processes by delivering CAE tasks and associated data to analysts, engineers, designers, suppliers and managers.

The architecture and implementation of SPDRM is scalable, so that it can be deployed in different levels, such as in team, department or enterprise level. The system requirements are modest and the learning curve is smooth.

This new software for the orchestration and mastering of simulation procedures gives breakthrough solutions to the bottlenecks faced while using legacy tools.

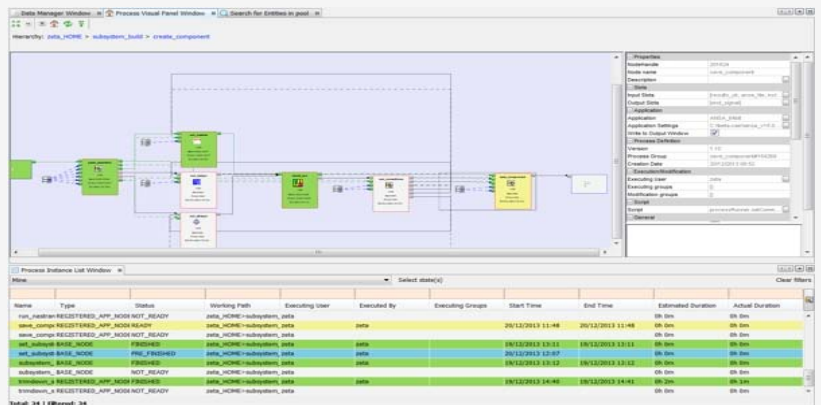
SPDRM brings significant benefits to today's virtual product development, such as:

- overall process consistency, at all levels
- standardization of the procedures
- harmonization of operations throughout the organization but also with its suppliers
- referability and traceability of data and meta-data, of their modifications and variations
- reduction of data redundancy
- process progress monitoring and the effective processes quality management
- reliable and referable documentation
- productivity increase thanks to the effective resources management through job delegation to available and competent resources
- repeatability of processes, even when using updated or different datasets and software tools
- quality improvement of the deliverables
- increase of confidence to CAE, plus the time and cost reduction of the overall simulation process

CAE workflow management

Using SPDRM's "process designer" the user can define simple actions, organize them into sub-processes, define their dependencies and associate these with the existing resources (human or other).

SPDRM automatically informs workflow actors about their assignments, communicates the correct data among actions and monitors their progress, giving a clear visualization of the workflow status.



Data management

Pre-processing data, result files, reports and CAE library files are stored in the SPDRM vault and are organized according to the Enterprise-specific data model: Different projects, releases, product variants, load-cases, CAE loops and runs are presented in a rational manner, allowing the effortless identification of the right data.

SPDRM data management tools ensure data security: Data access is configurable on user and group level, data recovery is possible and the database is handled in a centralized manner at an Enterprise level.

Furthermore, ANSA, from v15.0.0 onwards has direct access to the SPDRM data repository through its Data Management functionality. The SPDRM-ANSA integration enables secure user authentication, fast response to complex queries and privilege-based access to a wider spectrum of CAE data.

Resources management

Human resources can be registered in SPDRM directly from the Enterprise User Database system or can be created straight in the resources management console. In the end, individual user or group access rights are specified to data objects such as files or processes, in the known form of read-write-execute. Non-human resources like applications are also registered in SPDRM in order to be readily available for use through the process designer.

Supported platforms and System Requirements

The server software of SPDRM is currently available on Linux 64bits. The MS Windows flavour or the server software will be also made available soon.

The client software of SPDRM are running under 64bit flavours of Linux and MS Windows.

The software requires a different license key to the rest of the products of BETA CAE Systems. This license key should be incorporated into the same license file, if such is

already installed, and requires beta_lm, the proprietary license manager of BETA CAE Systems.

For details, refer to the [System requirements](#) document.

More Information

Contact [BETA CAE Systems](#) or one of its [local business agents](#) for more details on the product capabilities, licensing and deployment.

Download

Where to download from

Customers who are served directly by BETA CAE Systems S.A. may download the new software, examples and documentation from their account on our server. They can access their account through the "user login" link at our web site <http://www.beta-cae.gr> Contact us if you miss your account details. The [Public] link will give you access to the public downloads area.

Customers who are served by a local business agent should contact the local support channel for software distribution details.

What to download

All files required for the installation of this version reside in the folder named "**SPDRM_V1.0.0**" and are dated as of **December 30th, 2013**. This package contains the server software on Linux 64bit and the client software on Linux and MS Windows 64bit systems.

