

BETA CAE Systems S.A. announces the release of **μETA v6.7.1** with enhancements, new features and important code corrections

The official software release is comprised by the latest meta_post_v6.7.1 files dated November 2nd, 2011. These replace any pre-releases and files downloaded prior to this date.

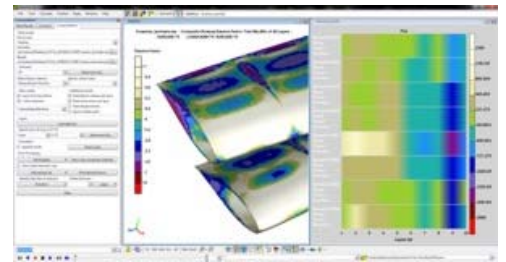
New features introduced

Known issues resolved

Compatibility

Download

Documentation



New features introduced

- Improved speed of interactively selecting entities from the screen.
- New Scalar results, named Puck X and Puck Y, for the post-processing of composites.
- Groups created from Nastran SETs when geometry is read from .op2 files.
- Column for PShell thickness is now available in the lists of the Statistics, Pids and Mids tools.
- Greatly improved speed of scanning and plotting Abaqus and LS-Dyna files in the 2D Plot tool.
- One-node, MPC, MASS and BUSH connections are now supported in the FRF Assembly tool.
- New toolbar named Strain Energy Bar Chart for creating bar diagrams of Strain Energy at Parts when post-processing Eigenmode Nastran results.
- Capability to change the fill-colour of cells in the Spreadsheet Editor, according to the value in the cell and the fringebar in use.

... and many more

[Go to Top](#)

Known issues resolved

- Nastran composite results would not be read correctly if a model included PCOMP layers with the SOUT(i) option set to "NO".
- Certain Radioss .erf files would not be read correctly.
- It was not possible to transform ANSYS results to local coordinate systems.
- Several issues related to the Fringebar.
- Various issues related to the 2D Plot tool.

... and many more

For more details about the new software features, enhancements and corrections please, refer to the [Release Notes](#) document.

[Go to Top](#)

Compatibility

μETA v6.7.1 can only run with beta_lm_tools v6.0 or later. The latest beta_lm_tools version is v6.3.

The .metadb files saved by the later versions of μETA are fully compatible and can be opened by earlier versions of μETA

[Go to Top](#)

Download

Where to download from

Customers who are served directly by BETA CAE Systems S.A. may download the new software, examples and documentation from their account in our server. They can access their account through the user login link at our web site <http://www.beta-cae.gr>

Contact us if you miss your account details. The [Public] link will give you access to the public downloads area.

Customers who are served by a local business agent should contact the local support channel for software distribution details.

What to download

For the installation of the software on each platform type the following are needed:

- the tar file with the respective platform name (e.g. Linux etc.), or the respective zip file for Windows and the "common" .tar or .zip file

Previous software releases can be found in the sub-directory called "old".

Particularly for the support of Abaqus odb files

- Only for the support of Abaqus odb files and depending on the Abaqus version you use, you will need to download the corresponding file(s), containing Abaqus libraries, from the META_POST_EXT_LIBS directory within the [Public] link. If the support of Abaqus odb files is not an issue then there is no need to download these files. To support, at the same time, Abaqus 6.3-4 (or earlier), Abaqus 6.4-x, Abaqus 6.5-x, Abaqus 6.6-x, Abaqus 6.7-x, Abaqus 6.8-x, Abaqus 6.9-x, Abaqus 6.10-x and Abaqus 6.11-x .odb files, it is recommended to download all respective Abaqus files. Note that for the support of .odb files of Abaqus version 6.8-x or later on Windows platforms, extra actions may be required. Please refer to the SetUp Guide for more details.
- The Abaqus libraries have to be downloaded once. If these files are downloaded now (or have been already downloaded with a previous μETA version), there is no need to download them again with a future version of μETA.
- It is also possible to use the Abaqus libraries directly from the installation directory of the Abaqus software, if this directory is accessible. In this case you can avoid downloading the respective Abaqus libraries from the [Public] link.

For more details, please, refer to the SetUp Guide.

Sample files for tutorials & examples on automation

Sample files that can be used with the tutorials as well as examples on automation can be downloaded from the META_POST_TUTORIALS directory within the [Public] link.

[Go to Top](#)

Documentation

Documentation is packed into the "common" file. While the "common" file is unpacked, you will find an html file that will guide you through the available pdf documents, including the Release Notes and the Users Guides.

Release Notes

Please refer to the Release Notes document for more details about the software corrections and the new features.

A detailed Release Notes document is available in pdf in the download directory and also in the /docs sub-directory within the installation directory.

Users Guide

The μ ETA Users Guide 6.5.0 is also available in pdf format.

Tutorial files' availability

The demofiles necessary to cover the tutorials' documentation are available as separate downloads within the META_POST_TUTORIALS folder of the [Public] area. The tutorial files have been updated and two additional tutorials, concerning the FRF Assembly tool and the 2d Plot tool, are now available within the Help menu.

[Go to Top](#)
